

CHAFING DISH ELETTRICO

// ELECTRIC CHAFING DISH

Sicuro e affidabile • Compatibile con GN 1/1 o divisioni.
Profondità max 100 mm • Temperatura regolabile da
30° C a 85° C • Interruttore ON/OFF con spia di controllo

Safe and reliable • Suitable with max 100 mm GN 1/1
pans and divisions • Adjustable temperature from 30°
C to 85° C • ON/OFF switch with control light

INCLUDE INCLUDING

Teglia GN 1/1 da 65 mm, spessore 0,8 mm
65 mm GN 1/1 pan, thickness 0.8 mm

ACCESSORI (NON INCLUSI) ACCESSORIES (NON INCLUSI)

RS632

Coperchio roll top
in policarbonato
BPA free Polycarbonate
roll top cover



RS633

Coperchio roll top in acciaio
S/S roll top cover



REF.
RS629A



8 056518 695223



CAPACITÀ VASCA/TANK CAPACITY
Max 13 Lt



TEMPERATURA/TEMPERATURE
da/from +30°C a/to + 85°C



DIMENSIONI/SIZE
55 x 36 x 35 (H) cm



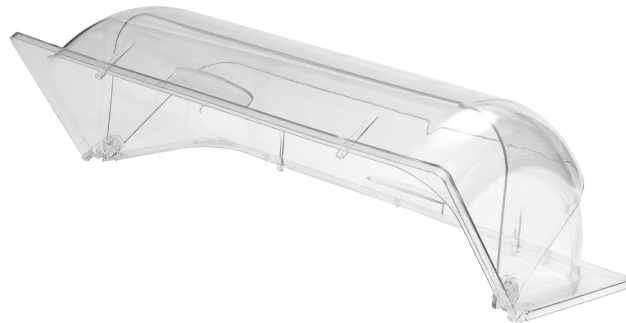
PESO/WEIGHT
4 Kg



DATI ELETTRICI/ELECTRICAL DATA
220V-240V ~ 50HZ - 600W

Dimensioni imballo
Carton size

1 pz 56,5 x 36 x 20 cm



RS632



RS633



RS629A